
Office of Strategic Initiatives

Overview of mission and status

Formalizing Ongoing Activities

- Strategic Scanning
- Team Formation
- Internal Investment

Strategic Scanning

- 6-24 month horizon
- Historical focus on federal agencies
 - » Expanding to include corporate and philanthropic sectors
- Advance notice of shifts in resources
 - » New programs
 - » Changes in priority
- Landscape for Congress and Agency interactions

Team Formation

- What are the questions we *could* be addressing?
- What are our disciplinary strengths and weakness?
- Who should be working with whom?
- How can we leverage our available strengths?
 - » Through new scholarship domains
 - » Through new and innovative partnerships

Internal Investment

- Linking internal potential with external opportunity
 - » New funding
 - » Societal challenges
- In aggregate, realize return on internal discretionary resources
 - » Incremental increases in external funding
 - » High risk / high return
 - Balance conservative tendencies
- Portfolio approach to research guidance

Strategic Initiative Program (SIP)

- Strategic Investment Fund
- University Development Fund
- Equipment Matching Fund
- Provost Investment Fund
 - » Selected projects are included in portfolio

SIP Portfolio: Rationale

- Portfolio is a systems approach to strategic investing
- Portfolio approach provides framework for investment
 - » Analyze distribution of existing activities
 - Competitive positioning (flexibility)
 - Robust to shocks (resilience)
 - » Implementation of institutional goals
 - Relate individual investments to institutional goals
 - Reconfigure as goals evolve
- New approach, still evolving

SIP Portfolio: Overview

- Area

- » Cross-cutting priorities

- Earth Systems
- Digital Media / Information Technology
- Urban

- » Foundational strengths

- Social Science & Humanities
- Science & Engineering

- Type

- » Program

- » Curriculum

- » Equipment & Infrastructure

- » Seminars & Conferences

- » People

Earth Systems

- Objective:
 - » Develop new knowledge and knowledge production capacity to address the challenges related to the relationship between Humans and our planet.
 - » Build our understanding of the relationship between scientific advance and the use of that knowledge in decision making.

Earth Systems

Topic Area	Programmatic	Curriculum	Equipment & Infrastructure	Seminars & Conferences	People
Earth Systems					
<i>Solid Earth</i>	LDEO Strategic Initiatives Earth Complexity Initiative Environmental Research Global Systems Post-Doc Univ. Consortium for Ocean Systems Integ. Predict & Assessment Effects of Sea Level Rise Arsenic Project (van Geen) Applied Physics	Environmental Science Curriculum Universe Semester	LDEO Equipment Match Mass Storage System Mass Spectrometer Mass Spectrometer - match Organic Env. Chem Lab startup Biosphere 2 Observatory		
<i>Lamont Investment Fund</i> Hudson River Efforts	Response to Past Changes Tracing Regional Water Sources Model Development Jamaica Bay pilot Jamaica Bay match	Education	Baseline for Instrumentation Vessel upgrades		
Carbon Cycle Studies	CO2 Sequestraion in Basalt Elevate CO2 and water use in trees Cloning of Calcium Channels CO2 Cycle and Chemical Weathering Closing the Carbon Loop				
Basic Earth Science Wired Earth Science	Mono Lake Studies		Arsenomometer Technical Innovation Center Data Management for the New Millennium Remote Observation Earth's Resources Deep Sea Moored Water Sampler Profiling Float for Marginal Ice Zone Real Time Monitoring Research Environmental Genetics Lab		
Earth Systems Science	CEI Integrated Earth Modeling System Center for Natural Hazards				
Ear Ecosystems	LDEO Packard Match Biosphere 2 various CERC Medical Ecology	DEEEB	Biosphere 2 Capital Projects Biosphere 2 Acquisition & Startup CERC ABI Sequencer CERC Black Rock Forest CERC - 7th & 8th floor Mudd CERC capital project		CERC/UDAR salary for DeMicco
<i>Human Systems</i>	PIR Laboratory of Populations Earth Policy Center (SIF) Environmental Effects on Children Ctr for Env, Business & Renew Res. NYC Grants		Earth Policy Center (UDF) Earth Insitute (PIF)	Decision Science Colloquium Democracy & Environment Conf. NYC Workshop	
Applications	IRI Earth Engineering Center		IRI WWW IRI Equipment		
<i>Integration</i>	Earth Insitute Earthscape	Earthscape EarthView Explorer		Global Systems Initiative Seminars	Sobel Post-Doc support

Earth Systems Exemplars

- CERC
 - » Strength through collaboration and institutional innovation
 - » Address biological segments of Earth systems
- Arsenic in Bangladesh
 - » Address tremendous social problem
 - » Connect soft-money powerhouses (LDEO & SPH)
- Earthscape
 - » Forge new and sustainable models of Earth systems publishing and content management
- Lamont Initiative Fund
 - » Open new frontiers in fundamental Earth Sciences
 - » Connect data-gathering history with web-based future
 - » Encourage interaction with other disciplines

Digital Media / Information Technology

- Objective:
 - » Position Columbia at the forefront of academic New Media development
 - » Contribute to Columbia's resilience through development of new revenue streams

Topic Area	Programmatic	Curriculum	Equipment & Infrastructure	Seminars & Conferences	People
Digital Media / Information Technologies <i>Digital Libraries & Digital Information</i>	Earthscape Electronic Publishing Information Center Center for Research on Info Access Digital Library Center Digital Library Systems Res (SI) Digital Library Systems Res (PIF) Janus Digital Library Project		Digital Library (Match)		
<i>Hardware / Software Technologies</i>	Engineering Research (New Media) 4D Technologies (GBRN) Building Technologies Information Technology Center Augmented Reality	Mathematica Biomedical Engineering Distance Ed.	CISE Research Infrastructure Engineering Research Center Long-distance Online class w/ UC Multimedia Classroom Columbia Video Network		
<i>Policy & Theory</i>	Telecommunications Institute NY-Warsaw Proj / Intl Knowledge Center for Digital Ecology Columbia Media Enterprises startup				
<i>Content Development</i>	Earthscape Electronic Publishing Information Center Advanced Papyrological Info Sys Institute for Learning Technologies Center for New Media (SI) Center for New Media (UDF) CARDGIS	Mathematica Biomedical Engineering Distance Ed. Archeology Laboratory EarthView Explorer	ILT - NTIA match Center for New Media - capital (UDF) Center for New Media - Digital Video Archeology Laboratory CARDGIS		
<i>Arts</i>	New Media Story Lab School of the Arts Digital Media (SI) Art History Lab / Amiens Cathedral Media Center for Art History (SI)		New Media Story Lab School of the Arts Digital Media (UDF) Art History Infrastructure Investments Media Center for Art History (UDF) Media Center for Art History (EMF)		
<i>Music</i>	Digital Music Delivery Electronic Music Center	Electronic Music Curriculum	Digital Music Delivery Music Department Investments Chemistry - Gateway Lab Construct Faculty IT Cluster / Gateway PC's Gateway Project Software Net in Chemistry Multimedia Chem & Chem fellowship VizChem 80Mhz VizChem software licenses		
<i>Chemistry</i>		Edison Project VizChem			

Digital Media / Info. Technology Exemplars

- Electronic Publishing Information Center
 - » Gain economy of scale through centralization of specialized expertise
- Electronic Music Center
 - » Strengthen historically important department
 - » Connect resources to broader constituency
- Advanced Papyrological Information System
 - » Facilitate scholarship around rare and fragile documents
 - » Build new research communities using web technologies
- Columbia Media Enterprise startup
 - » Augment traditional knowledge transfer activities
 - » Explore institutional and cultural elements of New Media knowledge management

Urban

- Objective:
 - » Live up to our name, Columbia University in the City of New York.
 - » Establish intellectual leadership in issues, which will be of growing importance, of growing urban centers.
 - » Establish a Columbia style of research characterized by it's integration.

Topic Area	Programmatic	Curriculum	Equipment & Infrastructure	Seminars & Conferences	People
Urban					
<i>Environment</i>	NYC Grants			NYC Workshop	
<i>Policy</i>	Center for Urban Policy Inst. For Child and Family Policy NYC Social Indicators Survey UN Habitat Project AFDC Migration Model Refugee Studies Program Congestion Pricing in Transportation				
<i>Extension</i>	Natl Center Infrastructure Studies Urban Technical Assistance Program Empowerment Zone Monitoring EZMAP Relocation		UTAP GIS labortory		
<i>Education</i>	Provost - Sr Advisor (Lab School)				

Urban Exemplars

- Urban Technical Assistance Project
 - » Explore the analogy of agricultural extension in urban setting
 - » Establish dialog between academic resources and local challenges
- NYC Social Indicators Survey
 - » Establish mechanisms for monitoring the well-being of our City
 - » Strengthen empirical social sciences at Columbia
- New York City Grants
 - » Build new communities of scholars that span LDEO and SIPA
 - » Establish foundation of urban environmental research

Social Science & Humanities

- Objective:
 - » Renew and enhance Columbia's standings in the Social Sciences and Humanities.
 - » Leverage our strengths through exploration of new interconnections and new applications.

Topic Area	Programmatic	Curriculum	Equipment & Infrastructure	Seminars & Conferences	People
Social Sciences & Humanities					
<i>Policy</i>	SIPA Research Institute Institute for War & Peace Studies		SIPA Communications Technology	NYC Workshop Democracy & Environment Conf.	
Public Policy Consortium	Public Policy Consortium	Public Policy Consortium			
Social Welfare	Inst. For Child and Family Policy NYC Social Indicators Survey		Social Work Resource Development Ctr NYC Social Indicators Survey		
Outcomes	Center for Science, Policy & Outcomes Intellectual Property Assessment Cultural Policy Initiative CARDGIS		CARDGIS		
<i>Theory</i>	Conflict Resolution Network AFDC Migration Model Center for Digital Ecology Conflict Resolution Network		Sociology Network High speed server Social Science Computing...		
<i>Inst. For Social & Econ. Res. And Policy</i>	Does Decentralization Make a Difference Seneca Village Archeology / History Staffing the State Model Selection Problems Reproductive Rights / Indiv. Well-Being Social Networks & Informl Job Training Familial Influence on Adolescent... American Institutions Project Elections and Government Composition Political Institutions and Trade Policy Internet Voting Project Campaign Dynamics Campaign Finance, Elections, Local Econ. New Media Firms in Silicon Alley		ISERP (UDF)		
<i>Economics</i>	Foreign Economics Research Center for Transitional Economies Russia's Market Transition OECD Countries Fiscal Policy Congestion Pricing in Transportation		Computer Equipment (O'Flaherty)		
<i>Law</i>	Center for Law and Philosophy				
<i>Integration</i>	Center Study of Science & Religion Technology & Society Initiative Human Capital	Archeology Laboratory	Archeology Laboratory	Chernobyl 10th Anniversary Gender Studies Seminar Decision Science Colloquium Diplomatic History & Intl Politics	

Social Science & Humanities Exemplars

- Institute for Social and Economic Research and Policy (ISERP)
 - » Link theoretical social sciences and policy scholarship
 - » Establish Columbia brand of social science research
- Institute for Child and Family Policy
 - » Gain non-linear advantage through combination of 3 high quality centers
- Cultural Policy Initiative
 - » Establish new field of policy scholarship
 - » Leverage our academic strength and geographic position

Science & Engineering

- Objective:
 - » Ensure continued growth of Columbia's research enterprise.
 - » Enhance the flexibility and robustness of Columbia's research enterprise.
 - » Improve the standing of Columbia's research and education programs.
- (Portfolio on next slide)

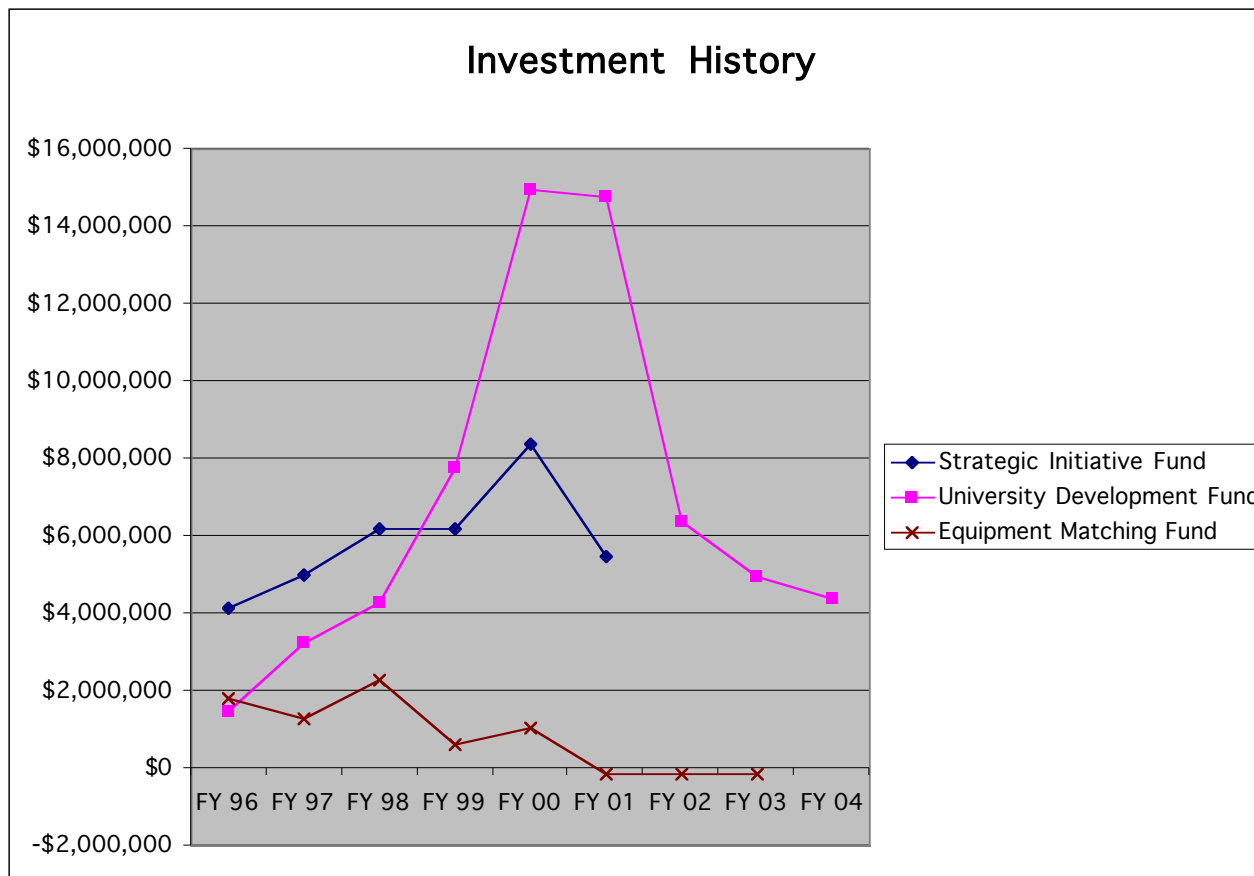
Science & Engineering

Topic Area	Programmatic	Curriculum	Equipment & Infrastructure	Seminars & Conferences	People
Science & Engineering					
<i>Integration</i>	Engineering Investment Fund Industrial Eng & Operations Res. Center for Applied Probability	Solar Transportation Columbia Video Network	Lab Startup (Shapiro Clean Room) Applied Probability	Media & Medicine Conference	Laboratory Startup (Stormer) Career Grant - NSF Match (Thomas) Post-Doc (Tomo)
<i>Biology</i>	Biophysics - Structural bio Biology Investment Fund Virtual Biology Department	SURF Program (SIF) SURF Program (PIF)	Luciferin Biological Marker Microscope Biology Projection System Immobilized Nucleic Acid Neurology Equipment Cartosil Analytical Software Single Cell Electroporator NMR & X-ray Instrument	Biomedical Sciences Conference Chemistry / Biochemistry Grad Seminar	
<i>Chemical Engineering</i>	Materials Research Center Defense Univ RIP Award Chem E and CGC init Free Radical Polymerization Polymer Adsorption - NSF match Polymer Research Center		IR Oscillator Equipment Match NSF Match - MRI	Chem/Eng Seminar	Chemistry / Chem E Admin
<i>Biomedical Eng.</i>	Biomedical Engineering (SI)		MRI Research Biomedical Engineering (EMF) Biomedical Engineering (UDF) Biomedical Engineering - capital		
<i>Design</i>	Augmented Reality	Gateway Lab	ACQ Rapid Prototype Gateway - NSF Match Architecture CAD system debt		
<i>Genomics</i>	Genome Center Chem E and CGC Init		Genomics in Computer Science		
<i>Materials</i>	Materials Research Barrier Material Engineering Laser Materials Processing NSF Match - MRSEC Engineering Lab Startup		Carleton Lab Renovation NYSERDA Match Surface Tension Equipment Equipment Match (Yao)	Materials & Molecular Chemistry	
<i>Radiation Laboratory</i>	Radiation Lab (Yardley)		NSF Match - Instr for Mat. Res. Radiation Lab Match Optical Flow Device - NSF match		
<i>Nanotechnology</i>	Nanotechnology Development of Nano...				Career Grant - NSF Match (Levicky)
<i>Environmental Molecular Science</i>	Environmental Molecular Sci. Inst.		NMR NSF Match		
<i>Astronomy / Cosmology</i>	Arcsecond Figure Measurement	MDM Observatory Universe Semester	MDM Observatory MDM Observatory CCD array Probing Far Infrared Fileserver Biosphere 2 Observatory CIRCA renovation		
<i>Chemistry</i>			Academic Research Infr program 500 Mhz NMR MS & NMR Structural Center NMR Instrument Maintenance IBM SP2 Computer IR Oscillator Equipment Match NSF Match - MRI DOE Equip Match - Laser	Materials & Molecular Chemistry Chemistry / Biochemistry Grad Seminar	Jr. Chemistry Faculty Admin. Chemistry / Chem E. Admin.
<i>Digital Chemistry</i>		Chemistry (Turro) Chem Lab Edus - NSF support Edison Project VizChem University Wide Reform	Chemistry - Gateway Lab Construct Faculty IT Cluster / Gateway PC's Gateway Project Software Net in Chemistry VizChem 80 MHz VizChem software licenses Multimedia Chem & Chem fellowship 412 Havemeyer		Salary Support - Noam Chonacy
<i>Turro Track Record</i>	Transition Grant		EPR Spectrometer loan		
<i>Mathematics</i>	NSF Match - SCREMS award	Mathematica			
<i>Health Sciences</i>	Nursing Health Sciences Projects		Comparative Medicine		

Science & Engineering Exemplars

- Environmental Molecular Science Institute
 - » Ensure Columbia leadership in fundamental shift in chemical research focus
 - » Enhance connections between Columbia chemists and other Columbia physical scientists
- MDM Observatory
 - » Gain expanded access to astronomy facilities
 - » Expand student experience in both NYC and B2C
- Radiation Lab
 - » Prepare for significant new Federal funding opportunity (nanotechnology)
 - » Evolve historical university strength

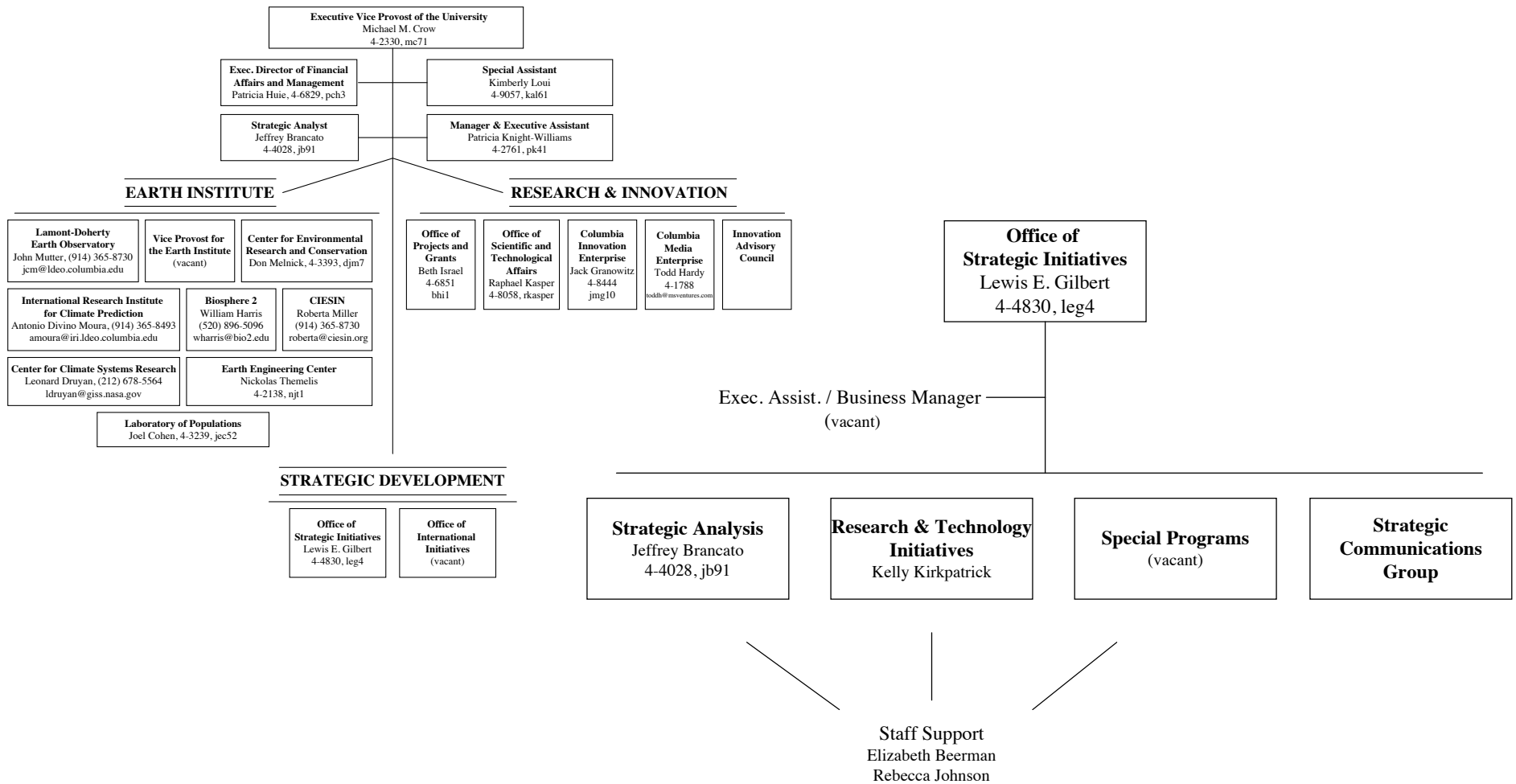
Investment History



Existing Centers and Institutes

- Ongoing Study
 - » Over 400 Centers and Institutes
 - » Developing basic taxonomy
 - » Reviewing university guidelines
- Preliminary Report ready in October 2000

OSI Staffing



Earth Systems Outcomes

- Arsenic Project
- Hudson River Projects
- Visualization Lab
- CIESIN
- CERC / DE3B
- Biocomplexity Proposals

Digital Media / Info Technologies Outcomes

- Digital Libraries
- Media Center for Art History
- Advanced Papyrological Information Systems

Urban Outcomes

- Urban Technical Assistance Project
- New York Social Indicators Survey
- Center for Urban Policy

Social Sciences / Humanities Outcomes

- Public Policy Consortium
- Institute for Child & Family Policy
- Social Science Computational Infrastructure
- Center for Organizations and Digital Ecology

Science & Engineering Outcomes

- Columbia Genome Center
- Biomedical Engineering Department
- Gateway Lab
- Undergraduate Astronomical Observing
- Shapiro Clean Room

SIP Facilitated A&S Appointments

- David Stark
- Horst Stormer
- Aron Pinczuk
- Jeremy Waldron
- Peter Bearman
- Duncan Watts
- Stuart Pimm
- Elke Weber
- Joel Cohen
- Lorenzo Polvani